

Water and School District Boundaries

San Jacinto

Hemet

Diamond Valley Lake

School Districts

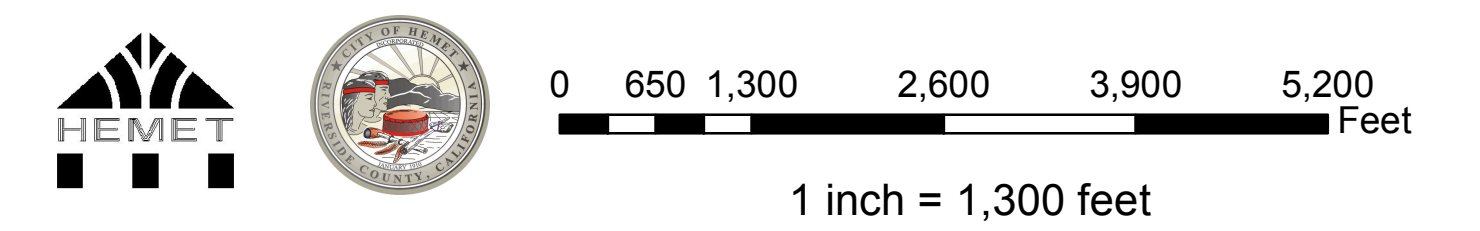
- School Districts (Red outline)
- Cities (Black outline)
- Waterbodies (Blue fill)
- Roads (Grey line)
- Highways (Thick grey line)

Water Agencies

- Lake Hemet Municipal Water District (Blue fill)
- City of Hemet Water (Green fill)

Water Districts

- EMWD (Yellow fill)
- OPEN AREA (Light yellow fill)



Every reasonable effort has been made to assure the information provided on the GIS maps and data is current, accurate and complete. However, the GIS database and the maps themselves are subject to constant change and the accuracy and completeness cannot be and is not guaranteed.

The data presented on these pages is not legally binding to the City of Hemet or any of its departments. These maps and the associated data are REPRESENTATIONS ONLY and may contain errors in the databases. Therefore, the information presented is for informational purposes only and should not be construed to be legally binding. The City of Hemet shall not be liable for any loss, damages or claims that arise out of the user's access to, or use of the maps, documents and data provided.

Author: Timothy Darden
Source: County of Riverside, City of Hemet

October 21, 2008
C:\Work\water.mxd

